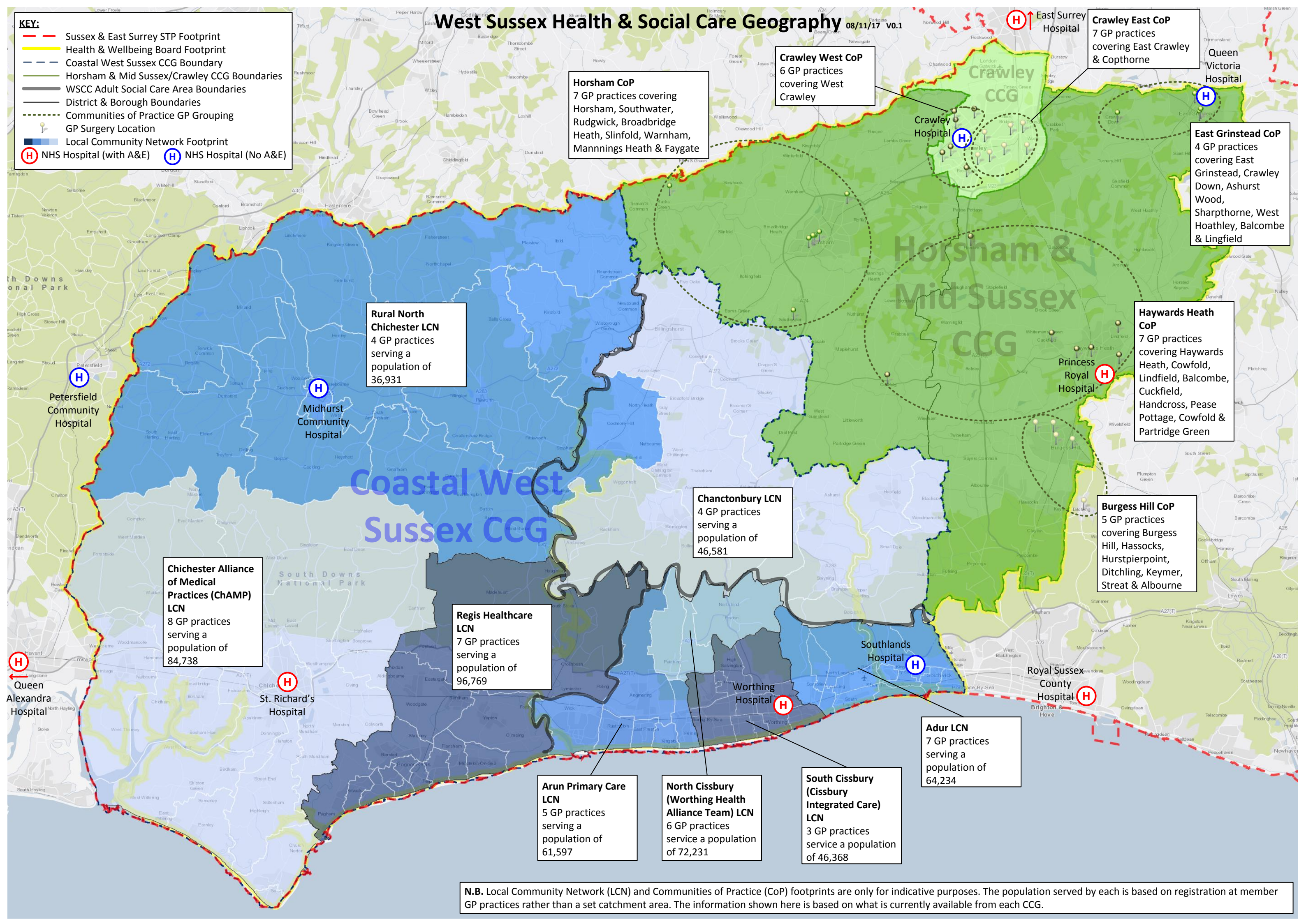


West Sussex Health & Social Care Geography 08/11/17 V0.1

KEY:

- Sussex & East Surrey STP Footprint
- Health & Wellbeing Board Footprint
- Coastal West Sussex CCG Boundary
- Horsham & Mid Sussex/Crawley CCG Boundaries
- WSCC Adult Social Care Area Boundaries
- District & Borough Boundaries
- Communities of Practice GP Grouping
- GP Surgery Location
- Local Community Network Footprint
- H NHS Hospital (with A&E)
- H NHS Hospital (No A&E)



Horsham CoP
7 GP practices covering Horsham, Southwater, Rudwick, Broadbridge Heath, Slinfold, Warnham, Mannings Heath & Faygate

Crawley West CoP
6 GP practices covering West Crawley

Crawley East CoP
7 GP practices covering East Crawley & Copthorne

East Grinstead CoP
4 GP practices covering East Grinstead, Crawley Down, Ashurst Wood, Sharpthorne, West Hoathley, Balcombe & Lingfield

Rural North Chichester LCN
4 GP practices serving a population of 36,931

Haywards Heath CoP
7 GP practices covering Haywards Heath, Cowfold, Lindfield, Balcombe, Cuckfield, Handcross, Pease Pottage, Cowfold & Partridge Green

Chanctonbury LCN
4 GP practices serving a population of 46,581

Burgess Hill CoP
5 GP practices covering Burgess Hill, Hassocks, Hurstpierpoint, Ditchling, Keymer, Streat & Albourne

Chichester Alliance of Medical Practices (ChAMP) LCN
8 GP practices serving a population of 84,738

Regis Healthcare LCN
7 GP practices serving a population of 96,769

Adur LCN
7 GP practices serving a population of 64,234

Arun Primary Care LCN
5 GP practices serving a population of 61,597

North Cissbury (Worthing Health Alliance Team) LCN
6 GP practices service a population of 72,231

South Cissbury (Cissbury Integrated Care) LCN
3 GP practices service a population of 46,368

N.B. Local Community Network (LCN) and Communities of Practice (CoP) footprints are only for indicative purposes. The population served by each is based on registration at member GP practices rather than a set catchment area. The information shown here is based on what is currently available from each CCG.